




|  |  |
|--|--|
| <p><b>PVC DUCT</b></p> <p><b>Split Duct &amp; Split Coupler</b></p> <p><b>(POWER)</b></p> <p>PowerProtect+</p> <p><b>EF450-020</b> (Rev 6)</p> |  |
|--|--|

### General

Ementelle Split Ducts & Couplers are designed, manufactured and supplied within an Integrated Management System, incorporating internationally recognised Standards including ISO9001, ISO14001 & ISO18001.

Ementelle Split Ducts & Couplers are a means of repairing damaged PVC Power duct systems with cables already installed in the system.

All split duct and couplers are manufactured from PVC duct which conforms to ENATS12-24.

### PVC Split Duct

Comprises 2 x 3m split halves, with H strips plus 3 x cable ties. Used in conjunction with PVC Split couplers. Standard sizes are detailed below, others are available upon request.

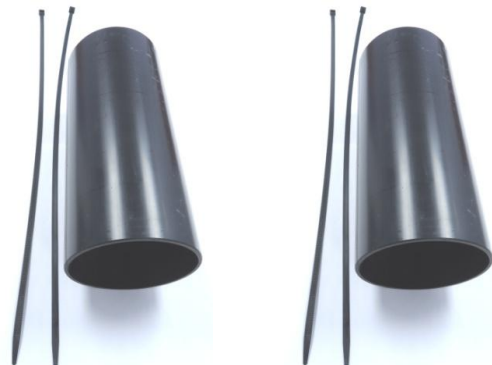
| OD     | Length | Lengths / Pallet | Meters / Pallet | Min Order Quantity | Product Code (Black) | Product Code (Red) |
|--------|--------|------------------|-----------------|--------------------|----------------------|--------------------|
| Ø110mm | 3m     | 90               | 270m            | 1 Pallet           | 71799                | 71893              |
| Ø125mm | 3m     | 68               | 204m            | 1 Pallet           | 71790                | 71894              |
| Ø140mm | 3m     | 53               | 159m            | 1 Pallet           | 71792                | 71895              |
| Ø160mm | 3m     | 39               | 117m            | 1 Pallet           | 71794                | 71896              |
| Ø200mm | 3m     | 25               | 75m             | 1 Pallet           | 71801                | 71897              |
| Ø225mm | 3m     | 18               | 54m             | 1 Pallet           | 71877                | 71934              |
| Ø250mm | 3m     | 16               | 48m             | 1 Pallet           | 71935                | 71936              |



### PVC Split Coupler

Used to connect Split duct to PVC duct, or adjoining lengths of Split duct. One code Comprises of 2 x Split Couplers and 4 x cable ties. Standard sizes are detailed below, others are available upon request.

| ID     | Length | Min Order Quantity | Product Code (Black) | Product Code (Red) |
|--------|--------|--------------------|----------------------|--------------------|
| Ø110mm | 200mm  | 20                 | 71793                | 71898              |
| Ø125mm | 250mm  | 20                 | 71795                | 71899              |
| Ø140mm | 300mm  | 20                 | 71797                | 71900              |
| Ø160mm | 300mm  | 20                 | 71780                | 71901              |
| Ø200mm | 400mm  | 20                 | 71902                | 71903              |
| Ø225mm | 450mm  | 20                 | 71937                | 71938              |
| Ø250mm | 500mm  | 20                 | 71939                | 71940              |



This product specification is intended as a guide only. Whilst the information it contains is believed to be correct, Ementelle can take no responsibility for actions taken based on the information contained in this document. Ementelle reserves the right to make changes to this document without notice. All sales of product are subject to Ementelle's terms and conditions of sale only, which can be found on Ementelle's website. [www.emtelle.com](http://www.emtelle.com)

This document is protected by copyright (c) Ementelle UK Limited 2015. The products depicted are protected by intellectual property rights. Any unauthorized copying of this document or of our products is prohibited and Ementelle UK Limited will take action to prevent any infringement of its rights and to claim damages for the loss that it suffers.