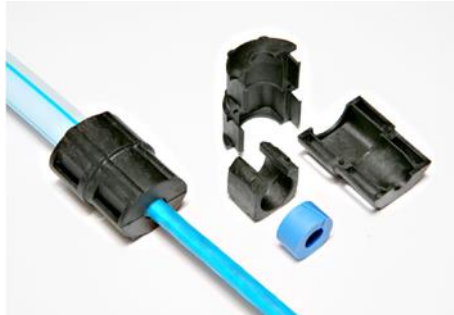


## UK\_DS\_71161

# FibreFlow™

## Divisible Duct Seal Plugs



### Product Description

Divisible mini-duct sealing plug sets developed to provide an effective and simple solution for gas and watertight duct sealing requirements. The modular system enables installation in new and existing situations.

### Design Features

- ⊗ Gas and Watertight up to 0.5 Bar
- ⊗ Suitable for retrofitting
- ⊗ Easy Installation
- ⊗ Slim Design

### Technical Specifications

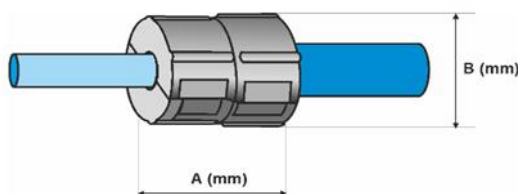
|                                  |                                  |
|----------------------------------|----------------------------------|
| Plastic Shells:                  | Glass-fibre reinforced polyamide |
| Cutting Blocks:                  | Glass-fibre reinforced polyamide |
| Sealing Plugs:                   | TPE                              |
| Sealing Pressure:                | up to 0.5 Bar                    |
| Pull-out force duct:             | ≥ 100N                           |
| Mechanical compression strength: | ≥ 1000N, 10 sec                  |



This document is intended as a guide only. Whilst the information it contains is believed to be correct, Emtelle can take no responsibility for actions taken based on the information contained in this document. Emtelle reserves the right to make changes to this document without notice. Purchase of Emtelle products does not convey any licence under patents or other intellectual property rights owned by third parties. All sales of product are subject to Emtelle's terms and conditions of sale only, which can be found on Emtelle's website. This document is protected by copyright (c) Emtelle Group [2021]. The products depicted are protected by intellectual property rights. Any unauthorized copying of this document or of our products is prohibited and Emtelle UK Limited will take action to prevent any infringement of its rights and to claim damages for the loss that it suffers.

[www.emtelle.com](http://www.emtelle.com)

## UK DS\_71161



| Emtelle Product Code | Description                          | Duct-Size (OD) | Cable Diameter | Size A (mm) | Size B (mm) | Supply qty. (per box) |
|----------------------|--------------------------------------|----------------|----------------|-------------|-------------|-----------------------|
| 73080                | MINI DUCT CABLE SEAL 10 (2.5-1.5mm)  | 10             | 1.5 - 2.5      | 32          | 25          | 25                    |
| 71161                | MINI DUCT CABLE SEAL 10 (3.5-2.5mm)  |                | 2.5 - 3.5      |             |             |                       |
| 71162                | MINI DUCT CABLE SEAL 10 (5.0-3.5mm)  |                | 3.5 - 5.0      |             |             |                       |
| 71163                | MINI DUCT CABLE SEAL 10 (6.5-5.0mm)  |                | 5.0 - 6.5      |             |             |                       |
| 71164                | MINI DUCT CABLE SEAL 10 (7.5-6.5mm)  |                | 6.5 - 7.5      |             |             |                       |
| 73561                | MINI DUCT CABLE SEAL 12 (2.5-1.5mm)  | 12             | 1.5 - 2.5      | 32          | 25          | 25                    |
| 71165                | MINI DUCT CABLE SEAL 12 (3.5-2.5mm)  |                | 2.5 - 3.5      |             |             |                       |
| 71166                | MINI DUCT CABLE SEAL 12 (5.0-3.5mm)  |                | 3.5 - 5.0      |             |             |                       |
| 71167                | MINI DUCT CABLE SEAL 12 (6.5-5.0mm)  |                | 5.0 - 6.5      |             |             |                       |
| 71168                | MINI DUCT CABLE SEAL 12 (8.0-6.5mm)  |                | 6.5 - 8.0      |             |             |                       |
| 73339                | MINI DUCT CABLE SEAL 12 (8.5-7.0mm)  |                | 7.0 - 8.5      |             |             |                       |
| 18700                | MINI DUCT CABLE SEAL 14 (2.5-1.5mm)  | 14             | 1.5 - 2.5      | 34          | 29          | 25                    |
| 18701                | MINI DUCT CABLE SEAL 14 (3.5-2.5mm)  |                | 2.5 - 3.5      |             |             |                       |
| 18702                | MINI DUCT CABLE SEAL 14 (5.0-3.5mm)  |                | 3.5 - 5.0      |             |             |                       |
| 71833                | MINI DUCT CABLE SEAL 14 (6.5-5.0mm)  |                | 5.0 - 6.5      |             |             |                       |
| 71169                | MINI DUCT CABLE SEAL 14 (8.0-6.5mm)  |                | 6.5 - 8.0      |             |             |                       |
| 71170                | MINI DUCT CABLE SEAL 14 (10.0-8.0mm) |                | 8.0 - 10.0     |             |             |                       |
| 18697                | MINI DUCT CABLE SEAL 16 (2.5-1.5mm)  | 16             | 1.5 - 2.5      | 34          | 29          | 25                    |
| 18698                | MINI DUCT CABLE SEAL 16 (3.5-2.5mm)  |                | 2.5 - 3.5      |             |             |                       |
| 72007                | MINI DUCT CABLE SEAL 16 (5.0-3.5mm)  |                | 3.5 - 5.0      |             |             |                       |
| 71978                | MINI DUCT CABLE SEAL 16 (6.5-5.0mm)  |                | 5.0 - 6.5      |             |             |                       |
| 71171                | MINI DUCT CABLE SEAL 16 (8.0-6.5mm)  |                | 6.5 - 8.0      |             |             |                       |
| 71172                | MINI DUCT CABLE SEAL 16 (10.0-8.0mm) |                | 8.0 - 10.0     |             |             |                       |
| 18703                | MINI DUCT CABLE SEAL 18 (5.0-3.5mm)  | 18             | 3.5 - 5.0      | 36          | 34          | 25                    |
| 18704                | MINI DUCT CABLE SEAL 18 (6.5-5.0mm)  |                | 5.0 - 6.5      |             |             |                       |
| 18705                | MINI DUCT CABLE SEAL 18 (8.0-6.5mm)  |                | 6.5 - 8.0      |             |             |                       |
| 72789                | MINI DUCT CABLE SEAL 18 (9.5-8.0mm)  |                | 8.0 - 9.5      |             |             |                       |
| 71173                | MINI DUCT CABLE SEAL 18 (12.0-9.4mm) |                | 9.4 - 12.0     |             |             |                       |
| 73567                | MINI DUCT CABLE SEAL 20 (5.0-3.5mm)  | 20             | 3.5 - 5.0      | 36          | 34          | 25                    |
| 73343                | MINI DUCT CABLE SEAL 20 (6.5-5.0mm)  |                | 5.0 - 6.5      |             |             |                       |
| 73344                | MINI DUCT CABLE SEAL 20 (8.0-6.5mm)  |                | 6.5 - 8.0      |             |             |                       |
| 72145                | MINI DUCT CABLE SEAL 20 (9.5-8.0mm)  |                | 8.0 - 9.5      |             |             |                       |
| 71174                | MINI DUCT CABLE SEAL 20 (12.0-9.4mm) |                | 9.4 - 12.0     |             |             |                       |

This document is intended as a guide only. Whilst the information it contains is believed to be correct, Emtelle can take no responsibility for actions taken based on the information contained in this document. Emtelle reserves the right to make changes to this document without notice. Purchase of Emtelle products does not convey any licence under patents or other intellectual property rights owned by third parties. All sales of product are subject to Emtelle's terms and conditions of sale only, which can be found on Emtelle's website. This document is protected by copyright (c) Emtelle Group [2021]. The products depicted are protected by intellectual property rights. Any unauthorized copying of this document or of our products is prohibited and Emtelle UK Limited will take action to prevent any infringement of its rights and to claim damages for the loss that it suffers.

[www.emtelle.com](http://www.emtelle.com)

## UK DS\_71161

|       |                                     |    |             |    |    |    |
|-------|-------------------------------------|----|-------------|----|----|----|
| 75725 | MINI DUCT CABLE SEAL 25 (3.7-4.7mm) | 25 | 3.7 – 4.7   | 40 | 37 | 25 |
| 75726 | MINI DUCT CABLE SEAL 25 (4.7-6.5mm) |    | 4.7 – 6.5   |    |    |    |
| 75727 | MINI DUCT CABLE SEAL 25 (6.5-8.5mm) |    | 6.5 – 8.5   |    |    |    |
| 75728 | MINI DUCT CABLE SEAL 25 (8.5-10mm)  |    | 8.5 – 10.0  |    |    |    |
| 74505 | MINI DUCT CABLE SEAL 25 (7-12mm)    |    | 7.0 – 12.0  |    |    |    |
| 75873 | MINI DUCT CABLE SEAL 25 (10-12mm)   |    | 10.0 – 12.0 |    |    |    |
| 76039 | MINI DUCT CABLE SEAL 25 (12-14mm)   |    | 12.0 – 14.0 |    |    |    |

### Packaging and Labelling

All products suitably packaged in recyclable materials and clearly labelled with Emtelle Product Code and Description where possible.

Supplied 2 half shells and a split rubber seal



Example of product, sizes 10-20mm



Example of product, size 25mm

### END OF SPECIFICATION