



PRE-CONNECTORISED FIBRE MICRODUCT SYSTEM



Pre-connectorised fibre installed into microduct during manufacture

Installation types include direct bury, ducted, façade & aerial

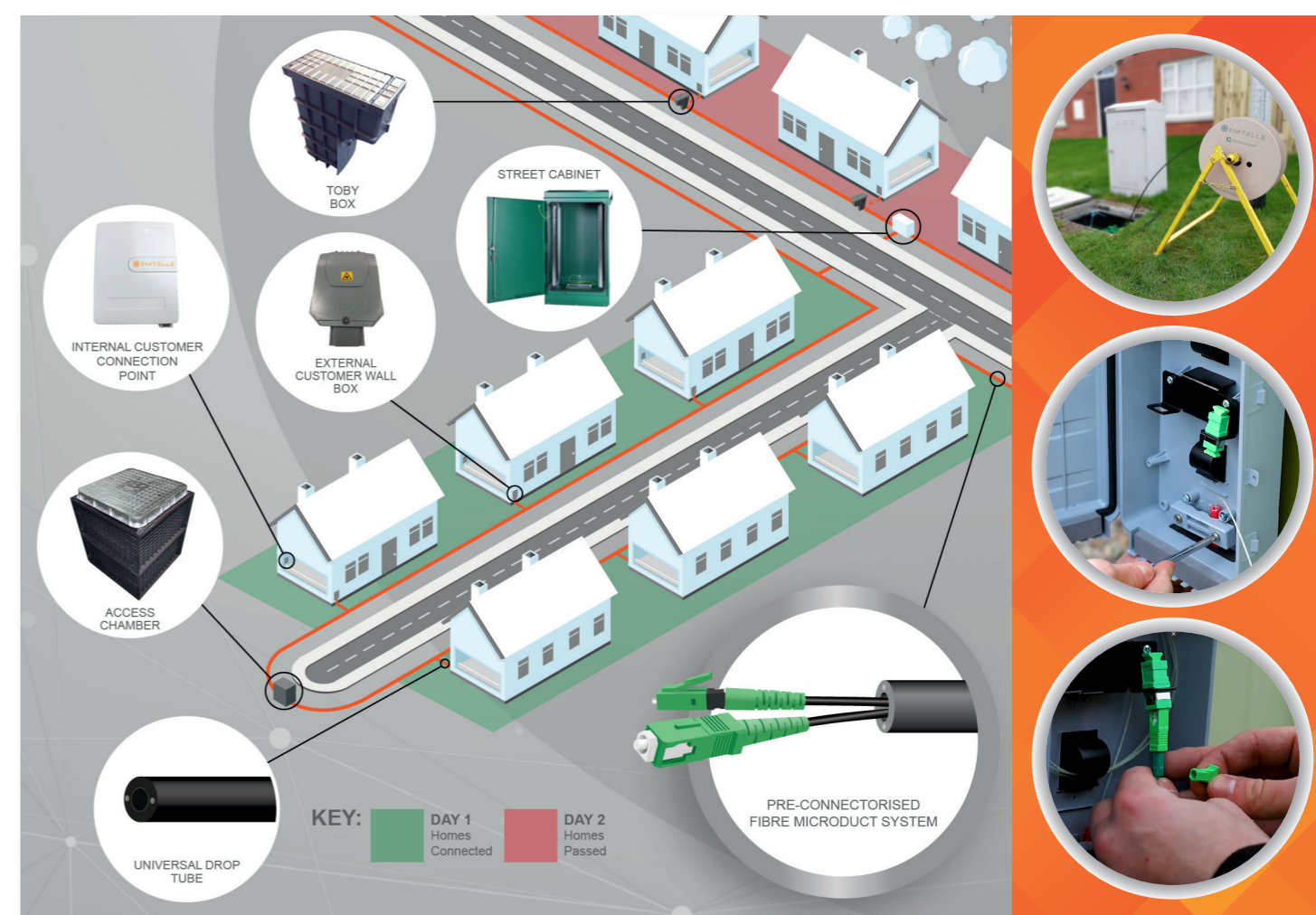
No blowing or fibre splicing required for the customer drop

QWKconnect is effectively pre-connectorised fibre within a Fibreflow microduct that is pre-installed during the manufacturing process that gives a dedicated pathway to each home. This innovative design means no blowing or fibre splicing is required, thus offering a simple solution that ensures a quick connection process without the need for specialist training or tools.

The fibre within the External HDPE or Internal LFH microduct can be connectorised at one end or both ends via a small form SC or a LC APC connector. Supplied in coils of 25m increments up to 300 metres, the desired length of the pre-connectorised fibre can be accessed by a simple ring-cut action to cut the microduct, and then the excess fibre can be stored at the home termination point. QWKconnect gives all the advantages of blown fibre, without the need for blowing.

Note: this solution is also available in LFH material for internal use, giving excellent performance in a fire scenario

This product can be made with SC connectors or LC connectors in the tube



QWKCONNECT BENEFITS

- Universal uses from direct bury, ducted, façade & aerial
- Fibre pre-installed can be connectorised at one end or both ends
- SC and LC APC connector options available
- No blowing or fibre splicing required for the customer drop
- Extremely small storage area for excess fibre
- Reduced skill set & training required for the install
- Massively reduced capex for installation equipment
- Cost (and space) effective compared to similar products in the market

QWKCONNECT VALUE PROPOSITION

FAST CONNECTION
UNDER 2 MINUTES

€125
SAVING
PER HOME

NO CAPEX
ON BLOWING OR
EQUIPMENT
(NO BLOWING OR SPLICING REQUIRED)



1

Push the duct rod from the customer connection to the main splice location, this is the best direction when using QWKConnect in a ducted network.



2

Attach the QWKConnect to the duct rod.



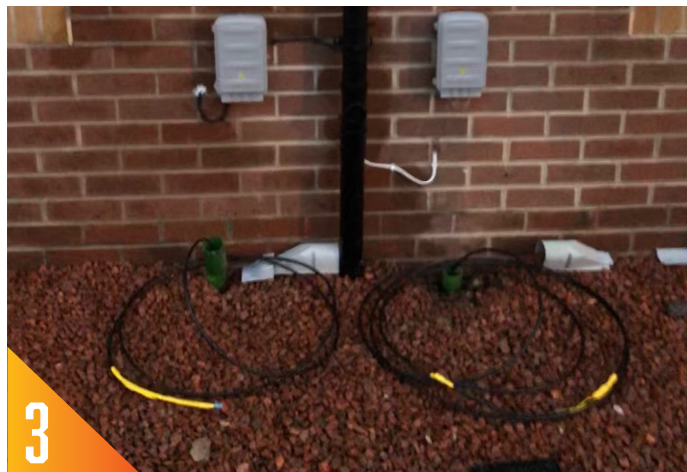
7

Fit the LC/APC boot protection body.



8

Plug in the QWKConnect to the splice location, switch on the light.



3

Pull all the excess QWKConnect to the customer connection point.



4

Ring cut the micro duct, remove the excess fibre and store at the customer connection point.



9

Customer connection with up to 30m of fibre stored in the CCP.



5

Fit the SC/APC boot protection body.



6

Plug in the QWKConnect SC/APC at the customer connection.



CONTACT US

Emtelle Group

Allan House, Floor 4
25 Bothwell Street
Glasgow, G2 6NL
United Kingdom

 **+44 (0) 1450 364 000**
 **info@emtelle.com**

Emtelle Hawick, UK

Haughhead
Hawick
TD9 8LF
United Kingdom

 **+44 (0) 1450 364 000**
 **info@emtelle.com**

Emtelle Jedburgh, UK

Oxnam Rd
Jedburgh
TD8 6NN
United Kingdom

 **+44 (0) 1450 364 000**
 **info@emtelle.com**

Emtelle Ridgemount Technologies Ltd

Unit 5, Field Farm
Business Centre,
Launton, OX26 5EL
United Kingdom

 **+44 (0) 1869 277 233**
 **ridgemount.info@emtelle.com**


Emtelle Scandinavia

Vardevej 140
7280 Sønder Felding
Denmark

 **+45 86 28 84 88**
 **salg@emtelle.com**

Emtelle GmbH

An der Flurscheide 20
99098 Erfurt
Germany

 **+49 (0) 361 654 330**
 **info-de@emtelle.com**

Emtelle UAE

Plot KHIA8-126, 127, 128
Taweelah
Abu Dhabi
UAE

 **+971 4 883 1608**
 **info@emtelle.com**

Emtelle USA

101 Mills Gap Rd
Unit A, Fletcher
NC 28732
USA

 **+1 (828) 7079970**
 **info@emtelle.com**

