



 **PowerProtect+TM**

PE DUCT SOLUTIONS

Advanced Cable Protection for Tomorrow's Energy Networks. When it comes to safeguarding high and extra-high-voltage power lines, Ementelle's PowerProtect+ PE Ducts deliver exceptional reliability and performance. Designed for the most challenging conditions, these solutions ensure fast, cost-effective installation across long distances to help you build the backbone of a sustainable energy future.

Power Network Solutions, All From One Provider.
Together, Everything Connects





Emtelle operates in the UK, Germany, Denmark, the UAE, and the USA, with sales representatives across Europe and Malaysia. Serving over 50 countries, Emtelle brings more than 40 years of experience and continuous innovation in power and telecom ducting.

Established in the early 1980s in Jedburgh, Scotland, Emtelle has grown into a leading extrusion specialist with advanced production facilities and a comprehensive range of network components.

Offering a true one-stop-shop, Emtelle streamlines sourcing for power network infrastructure - from HDPE Sub-Ducts, Large Diameter PE Ducts and bends to protection tiles, warning tape and other accessories - helping customers build power networks efficiently.

POWERPROTECT+ PE-RT

A high-performance, raised-temperature cable protection duct designed for high and extra-high voltage applications. Provides permanent thermal resistance for over 50 years, matching the standards of our PowerProtect+ PE100 but with enhanced thermal stability.

Standard Dimension Ratio: Available in SDR9 to SDR26

Straight Lengths or Coils: Available in 6 - 21m lengths or 50 - 100m coils

Outside Diameters: Sizes from 40mm to 800mm OD

Thermal Resistance: -40°C up to 70°C (95°C) UV-resistant outer layer

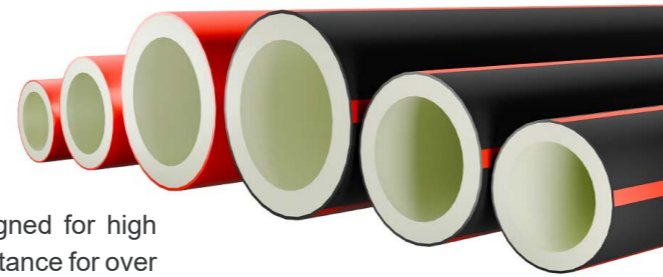
Industry Standards: Compliant with DIN 16833 and EN 12201

Benefits

Temperature Resistance: Long-term thermal resistance.

Installation Methods: Ideal for HDD and open trench installations.

Minimum 50 Years Service Life: Reliable performance in extreme conditions.



Scan QR code for
more information



POWERPROTECT+ RT/RC

Built on the PowerProtect+ PE-RT platform, this duct offers improved stress crack resistance for increased durability. Designed for high-voltage cable protection with long-term thermal stability.

Standard Dimension Ratio: Available in SDR9 to SDR26

Straight Lengths or Coils: Available in 6 - 21m lengths or 50 - 100m coils

Outside Diameters: Sizes from 40mm to 800mm OD

Thermal Resistance: -40°C up to 70°C (95°C)

Crack Resistance: Enhanced stress crack resistance

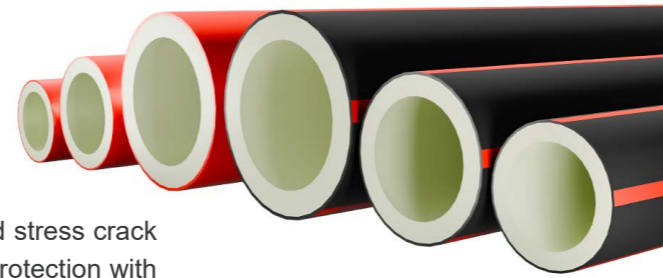
Industry Standards: Compliant with DIN 16833 and EN 1555

Benefits

Crack Resistance: Superior thermal and stress crack resistance.

Installation Methods: Suitable for HDD and open trench.

Minimum 50 Years Service Life: Long service life under stress.



Scan QR code for
more information



POWERPROTECT+ PE

A high-tensile cable protection duct engineered for exceptional performance in Horizontal Directional Drilling (HDD). It is designed to minimise environmental impact and enables underground installation that safely crosses roads, rivers, railways or other obstacles, reducing surface disruption while ensuring long-term reliability.

Standard Dimension Ratio: Available in SDR9 to SDR26

Straight Lengths or Coils: Available in 6 - 21m lengths or 50 - 100m coils

Outside Diameters: Sizes from 40mm to 800mm OD

High Tensile Strength: Designed for HDD (SDR9 - 11)

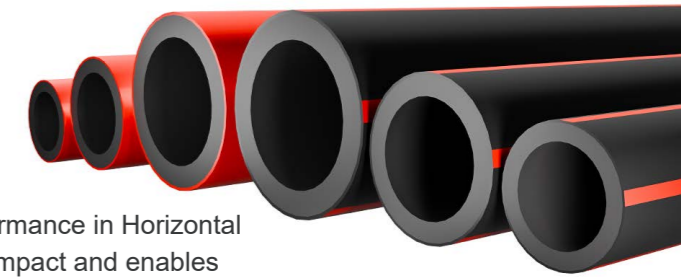
UV-Resistant: UV-resistant outer layer

Benefits

Less Intrusive Installation Method: Trusted for HDD installations for over a decade, crossing obstacles such as roads, rivers, railways etc.

High Mechanical Strength: Ideal for the tensile forces associated with HDD installations.

Environmentally Friendly: HDD installations significantly help to reduce disturbance on the natural landscape.



Scan QR code for
more information



POWERPROTECT+ PE100

Premium PE100 cable duct suitable for all cable protection applications. Designed for durability and versatility across various installation methods.

Standard Dimension Ratio: Available in SDR9 to SDR26

Straight Lengths or Coils: Available in 6 - 21m lengths or 50 - 100m coils

Outside Diameters: Sizes from 40mm to 800mm OD

Durability & Versatility: Great for HDD (SDR9 - 11) and Open Trench installations

Chemical Resistance: Resistant to most chemicals, acids, and alkalis

Industry Standards: Compliant with EN 12201

Benefits

Crack Resistance: Superior stress resistance.

Installation Methods: Suitable for HDD and open trench.

Minimum 50 Years Service Life: Long service life under stress.



Scan QR code for
more information



POWERPROTECT+ C1+

A high-quality cable protection duct built to Class 1+ standards according to ENATS 12-24. Perfect for regulated power installations.

Standard Dimension Ratio: Available in SDR9 to SDR26

Straight Lengths or Coils: Available in 6 - 21m lengths or 50 - 100m coils

Outside Diameters: Sizes from 40mm to 800mm OD

UV-Resistant: UV-resistant outer layer

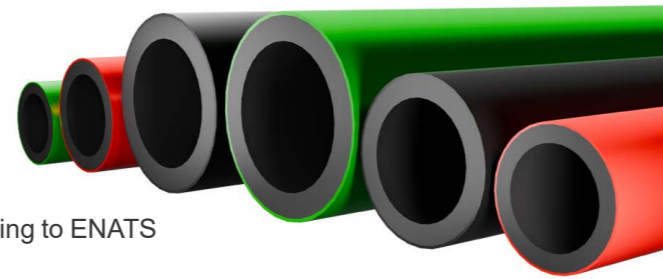
Industry Standards: Certified to ENATS 12-24

Benefits

High Strength & Durability: Robust and reliable.

Installation Methods: Suitable for HDD and trench installs.

Minimum 50 Years Service Life: Meets power specifications.



Scan QR code for
more information



POWERPROTECT+ KSR DIN 16874

Power cable protection duct made from high-density polyethylene (PE-HD), manufactured according to DIN 16874 standards and designed for underground installations. Features a low-friction inner surface to facilitate easier cable installation.

Standard Dimension Ratio: Available in SDR9 to SDR26

Straight Lengths or Coils: Available in 6 - 21m lengths or 50 - 100m coils

Outside Diameters: Sizes from 40mm to 800mm OD

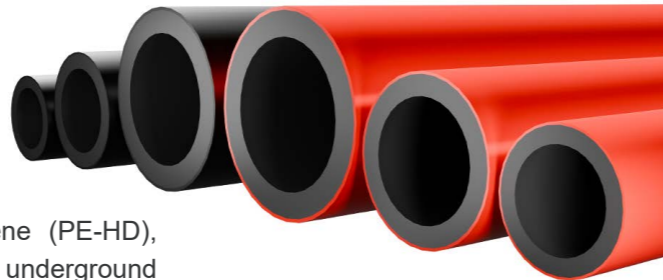
Industry Standards: DIN 16874 standards

Benefits

Easier Cable Pulling: Smooth internal bore ensures low friction for easy cable pulling and minimises damage risk.

Supports Trenchless Installation: Perfect for Horizontal Directional Drilling (HDD), reducing disruption and cost.

Long Service Life: Expected lifespan of 50–100 years under proper installation and operation.



Scan QR code for
more information



POWERPROTECT+ ESB

Durable and strong cable protection duct built to ESB specifications. Designed for open trench installations with improved handling features.

Standard Dimension Ratio: Available in SDR9 to SDR26

Straight Lengths or Coils: Available in 6 - 21m lengths or 50 - 100m coils

Outside Diameters: Sizes from 40mm to 800mm OD

Chamfered Ends: Faster and easier insertions

Depth of Entry Marking: Ensures proper sealing

Industry Standards: Made in accordance to the ESB specifications

Benefits

Easy Installation: Chamfered ends and depth of entry markings.

Long-Lasting Durability: Strong and durable cable protection duct.

ESB Compliant Design: Covers key requirements for electricity cables.



Scan QR code for
more information



CON-DUCT™ PE

Innovative duct system with conductive coating for rapid fault tracing. Available throughout the entire Emtelle range, from PE-RT to sustainable PE.

Standard Dimension Ratio: Available in SDR9 to SDR26

Straight Lengths or Coils: Available in 6 - 21m lengths

Outside Diameters: Sizes from 40mm to 800mm OD

Chamfered Ends: Faster and easier insertions

Innovative Conductive Coating: Rapid cable fault detection within a ducted network

Benefits

Fast Electrical Fault Locating: Our innovative conductive coating.

Compatible with the PowerProtect range: Choose your duct and have our unique conductive coating added.

Ideal for Power Networks: Save valuable time finding faults in your network.



Scan QR code for
more information



EMTELLE ACCESSORIES

New HDPE Accessories / Established Ducting Solutions

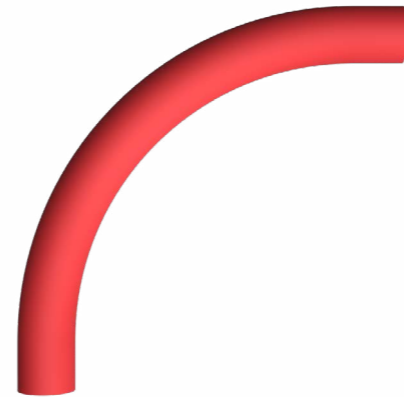
Emtelle delivers a complete Power and Telecom ducting solution, offering a comprehensive range of products including cable and duct seals, cable protection systems, duct cleaning and proving solutions. We're excited to introduce a new range of HDPE accessories coming to market, with bends available on request—further expanding our ability to support robust, efficient, and future-ready networks.

POWERPROTECT+ PE BENDS

PowerProtect+ PE Bends are designed to be used with PowerProtect+ PE ducts where a change of direction is required.

Available in: 22.5° 45° and 90° with different radius designed to work with typical power cable minimum bending requirements.

Different colours and standards available on request



POWERPROTECT+ SEGMENTED PE BENDS

PowerProtect+ Segmented PE Bends are designed to be used with PowerProtect+ PE ducts where a change of direction is required.

Available in: 22.5° 45° and 90° with different radius designed to work with typical power cable minimum bending requirements.

Different colours and standards available on request



CON-DUCT™ PE COUPLERS

Couplers provide the means to connect two spigot ends of the duct by sliding over one spigot and pulling back to cover the other spigot.

Method of connection is desirable in circumstances of repair

Standard colours are Black, Red & Grey



CABLE PROTECTION TILES

Cable protection tiles are heavy-duty protective boards designed to provide a protective layer for underground ducted networks.

Industry Standards: Manufactured to ENATS 12-23 specification

Suitable for Power and Fibre Optic Cables Ducting

Bespoke print templates are available upon request as well as different colours and sizes



CABLE WARNING TAPE

Suitable for power, street lighting and fibre optic cables. Available with detectable wire for traceability.

Flexible Product Supplied in a Roll

Suitable for Power and Fibre Optic Cables Ducting

Bespoke print templates are available upon request as well as different colours and sizes



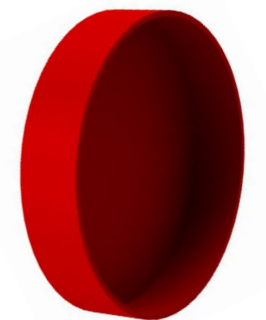
END CAP

Provide a means of temporary sealing duct systems during construction to prevent the ingress of dirt and surface water.

Size Range: From 40 to 800mm OD

Fitting: Endcaps fit over the spigot ends of ducts

Used to Prevent the Ingress of Dirt During Installation



ACCESS CHAMBER

Designed for both footway and roadway installations where it provides access to underground ducting.

Each chamber is made from 150mm stacking sections

Rated: D400 and B125

Working Temperature Range: -40°C to +100°C

Installation in Environments rated to D400 and B125 under EN124



“From concept through installation and beyond, Emtelle’s duct specialists are on hand to support every stage of your network.”



EMTELLE'S FULL OFFERING

Supply

Emtelle ensures reliable and efficient supply solutions through its extensive production capacity and well-established logistics network. Supported by experienced duct specialists, dedicated teams work closely with customers to coordinate product availability, manage timelines, and support delivery requirements, helping projects progress smoothly from concept through installation.

Customer Service

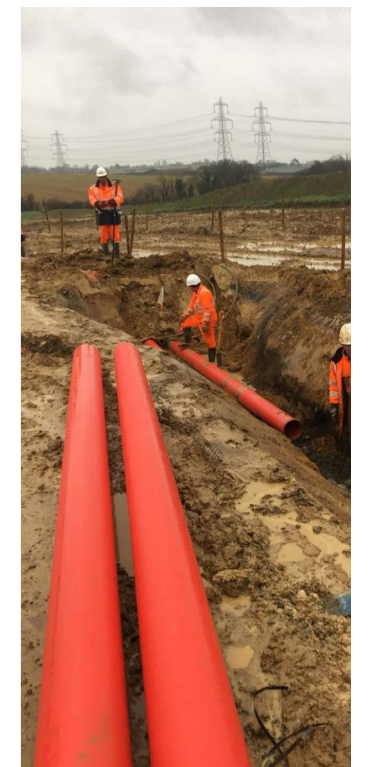
Emtelle's customer service teams are readily available to provide clear communication and responsive assistance at every stage of a project. Working alongside our duct specialists, they offer practical guidance, answer enquiries promptly, and help ensure customers receive the right solutions for their specific network requirements.

Support

Emtelle provides ongoing technical and operational support through experienced specialists who are on hand to assist when needed. Emtelle supports customers in addressing challenges, optimising solutions, and maintaining confidence in network performance throughout the product lifecycle.

Training

Emtelle offers training delivered by knowledgeable professionals to support safe and effective installation and use of its solutions. These training services help customers build capability, improve understanding, and maximise the long-term value of Emtelle products.





CONTACT US

Emtelle Group

Allan House, Floor 4
25 Bothwell Street
Glasgow, G2 6NL
United Kingdom

 **+44 (0) 1450 364 000**
 info@emtelle.com

Emtelle Hawick, UK

Haughhead
Hawick
TD9 8LF
United Kingdom

 **+44 (0) 1450 364 000**
 info@emtelle.com

Emtelle Jedburgh, UK

Oxnam Rd
Jedburgh
TD8 6NN
United Kingdom

 **+44 (0) 1450 364 000**
 info@emtelle.com

Emtelle Ridgemount Technologies Ltd

Unit 5, Field Farm
Business Centre,
Launton, OX26 5EL
United Kingdom

 **+44 (0) 1869 277 233**
 ridgemount.info@emtelle.com



Emtelle Scandinavia

Vardevej 140
7280 Sønder Felding
Denmark

 **+45 86 28 84 88**
 salg@emtelle.com

Emtelle GmbH

An der Flurscheide 20
99098 Erfurt
Germany

 **+49 (0) 361 654 330**
 info-de@emtelle.com

Emtelle UAE

Plot KHIA8-126, 127, 128
Taweelah
Abu Dhabi
UAE

 **+971 2 565 9115**
 info@emtelle.com

Emtelle USA

101 Mills Gap Rd
Unit A, Fletcher
NC 28732
USA

 **+1 (828) 7079970**
 info@emtelle.com

